

  
**RITON**



**X3 TACTIX**  
**PRD**

## Table of Contents

3	Optic Specifics
4	Technical Specifications
5	Explanation of MOA
5	Explanation of Second Focal Plane
5	Reticle Information
5	Explanation of Parallax
6	Illumination System
6	Factory Zero, Windage and Elevation
6	Mounting the Riton Optic
7	Bore Sighting
7	Zeroing the Rifle Scope
8	Troubleshooting
8	Warranty

# THANK YOU FOR MAKING A PURCHASE WITH RITON OPTICS.

We know that you have many options and we are thankful for selecting Riton as your optics provider.

As a company founded by Law Enforcement and Military Veterans, we take our commitment to service seriously. We have an unwavering passion for offering high quality optics at the industry's most competitive prices and matched by incredible service. You will see the difference in everything we do because we are different, and we developed this company to be exactly that so that you, the consumer, get everything you deserve. If you are ever in need of additional information or assistance, please contact us. We are here to continually serve you as a valued partner.

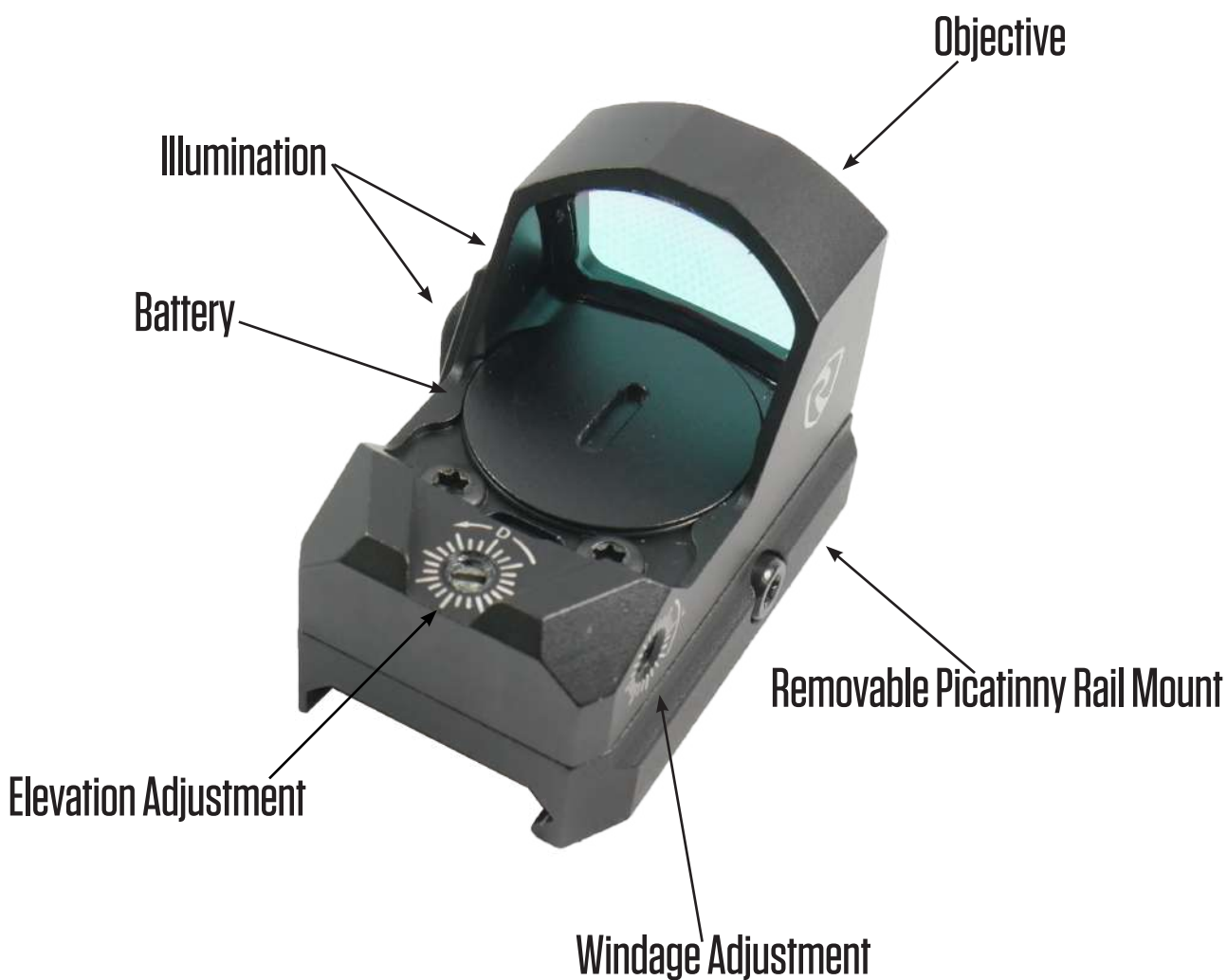
# X3 TACTIX PRD

## Optic Specifics

The Riton Pistol Red Dot (PRD) is a streamline powerful red dot that will get you on target rapidly with precision. Ideal for pistols or AR platforms The PRD sports a precise 3 MOA dot.

### DETAILED PRODUCT FEATURES:

- Equipped with Anti-reflective lens coating on lens surface for brighter views
- Constructed with shockproof technology to withstand 800 G impacts
- Equipped with auto shut off after 4 hours of use.
- Over 40,000 hours of battery life"



## Technical Specifications



Mount type- picatinny

Mag- 1x

Eye relief- unlimited

Length- 46mm

Width- 28mm

Weight- 32 grams. 2.3w b

Height- 26mm without 30.5mm with

Parallax free

Windage- 45 MOA

Elevation- 45 MOA

Fully multi coated

Dot size- 3 MOA

Illumination- 1-6 cr1632

Battery life- 40,000+ Hours

Auto Shut off - 4 Hours

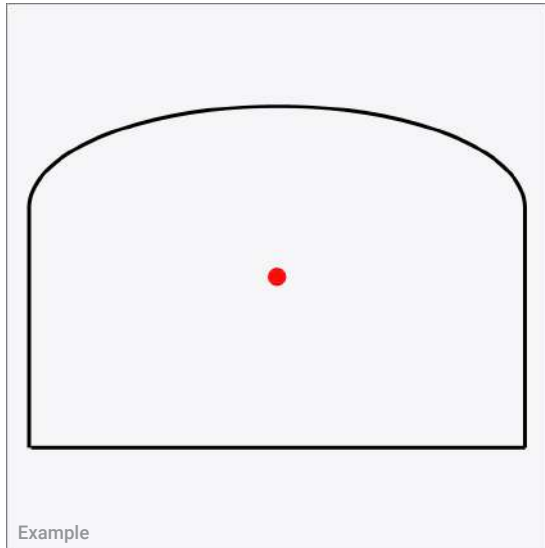
Water proof

Shock proof- 800g

Accessories- Rubber Sight Cover, picatinny mount

## Reticle Information

The X3 Tactix PRD has a 3 Minutes of Angle (MOA) dot, is night vision compatible and can run up to 40,000 hours on one single CR1632 battery.



## Explanation of Parallax

Parallax describes a situation where the focal plane of the object in the scope is offset from the reticle. If you have parallax, you have an optical illusion that must be corrected. Parallax should not be confused with focus. Parallax compensation changes neither the focus of the reticle nor the focus of the image; it simply moves the planes at which these two objects are in focus so that they share the same plane.

**YOUR RITON RIFLESCOPE DOES NOT HAVE A PARALLAX FOCUS AND IS FACTORY FOCUSED AT A DISTANCE OF 100 YARDS.**

# Illumination System

The variable intensity reticle illumination system aids in low light situations.

## TO ACTIVATE THE ILLUMINATION:

1. Press the + (plus) button to increase illumination

Note - The illumination button allows for 11 levels of brightness intensity.



## TO CHANGE BATTERY:

1. Unscrew the outer cap.
2. Remove the battery.
3. Replace with a new CR1632 battery with positive side out.
4. Re-install the battery cap and be sure to tighten fully.

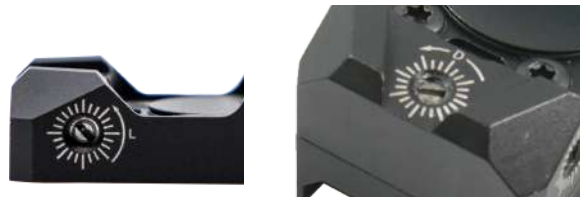


# Factory Zero

Your Riton riflescope is pre-set from the factory with the reticle in the center of the adjustment ranges.

## TO FIND FACTORY ZERO:

1. Dial turret one direction until it will no longer rotate.  
NOTE - Do not force the turret past it's stopping point.
2. Dial turret opposite direction counting how many MOA it turns.
3. Divide that total number of MOA in half and dial to that number for your factory zero.
4. Complete this procedure for both windage and elevation dials to approximately center the reticle.



# Mounting Your Riton Red Dot

## TO MOUNT YOUR RITON RED DOT:

1. Your Riton PRD come with a picatinny rail mount and when removed it has a RMR footprint.
2. Picatinny mount may be removed by using the provided allen wrench to loosen the two screws and pull the mount and optic apart then you can mount the Red Dot to your pistol.
3. Using the provided allen wrench loosen the picatinny base bolt. Then attach the lower base and make sure this is solidly seated in the base groove. To prevent recoil injury, position the Red Dot so that you have at least four inches of eye relief.
4. Be sure the base clamp is hooked around the outside of the rail/base. Press downward and forward toward the muzzle. Then, firmly tighten the base clamp hex nut.
5. Note. the Riton PRD has an unlimited eye relief



# Bore Sighting

Bore sighting is a preliminary procedure to achieve proper alignment of the scope with the rifle's bore. Initial bore sighting of the riflescope will decrease the amount of time and ammunition you need to use at the range.

This can be done by using a mechanical or laser bore sighter according to the manufacturer's instructions or by removing the bolt and sighting through the barrel on some rifles.

## TO BORE SIGHT YOUR RIFLESCOPE:

1. Place the rifle solidly on a rest and remove the bolt.
2. Sight through the bore at a target approximately 100 yards away.
3. Move the rifle and the rest until the target is visually centered inside the barrel.
4. With the target centered in the bore, make windage and elevation adjustments until the reticle crosshair is also centered over the target.

Note - If a laser bore sighting or any other similar device inside the bore was used, it must be removed before firing. An obstructed bore can cause serious damage to the gun and possible injury to the shooter.

# Zeroing the Scope

## IMPORTANT SAFETY CHECKS:

- Always check your weapon and surroundings for safety.
- Follow all weapon manufacturer safety guidelines.
- Always shoot from a solid rest using consistent and proper form.
- Be sure that your target is level to aid in accurate sight-in process.

## TO ZERO THE SCOPE:

1. Start sight-in process from 25 yards, from solid rest fire 3-shot group, ensuring that you fire at same spot each time. Use grid lines on target to center and level your crosshairs.
2. After the first 3-shot group, make adjustments to bring bullet impact to center of target you're shooting at. Repeat this process at 100 yards and you will have accurate 100 yard zero.

Note - Scope graduations are 1/4 MOA. Scope turrets are marked with direction of bullet impact change. At 100 yards a 1/4 MOA scope adjustment will move bullet impact 1/4 inch in direction adjusted. At 25 yards that same 1/4 MOA adjustment will be 4 times smaller, so 1/4 MOA adjustment at 25 yards will move bullet impact 1/16 of an inch

## Troubleshooting

Problems thought to be associated with the scope are often actually mount problems. Take time to ensure the mounts are tight to the rifle and that scope is secured and doesn't twist or move in the rings. Confirm that correct base and rings are being used and in the proper orientation. Be sure to torque rings per manufacturer's specs.

Keep in mind there are many issues that can cause poor bullet grouping. Always utilize a solid rest and maintain good shooting technique. Have a qualified gunsmith look over your rifle to be sure all things are in working order. See that the action and barrel are properly cleaned. Some rifles and ammunition don't work well together, try different ammunition and see if accuracy improves.

## Riton Warranty

As a part of the Riton Promise we believe in providing you with the best possible service, including the industry's best warranty. The quality of our products makes this the best warranty you'll likely never have to use; however, as hunters and outdoorsmen and women, we know that bad things sometimes happen to even the most cautious.

### **OUR WARRANTY IS SIMPLE:**

- No proof of purchase or registration required for your Riton products.
- Lifetime warranty regardless of original purchaser.
- All warranty replacements will receive a brand-new product off the shelf. We will not ever replace the product with a repaired or refurbished product.
- Replacement product will be shipped within 48 hours of receiving and approving your return.
- Loss, theft and/or deliberately worn and damaged products are not covered. Warranty is VOID if damage results from unauthorized repair or alteration.



1-855-39-RITON

info@ritonusa.com

**RITONOPTICS.COM**